

## 2.4 CONTAINER, COVER AND LID

These are made for ABS720 Resin, a synthetic resin, which has a superior acid resistance and durability. The container and cover are designed to be completely sealed to prevent any leakage of electrolyte and gas.

Characteristics:

Parameter	Contents
Quality of the Material	ABS 720 Resin
Durability of Electric pressure	Pressure 550mV and endurable 3 sec
Durability of Impact	18 kg.cm /cm
Durability in flames	97g/10min
Tensile Strength	580 kg/cm <sup>2</sup>
Hardness	115 R Scale
Contractibility	0.4% - 0.7%

## 2.5 TERMINAL

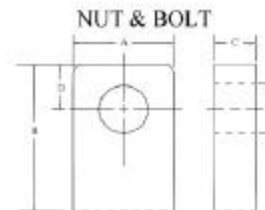
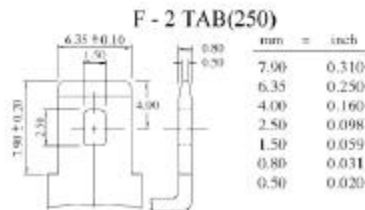
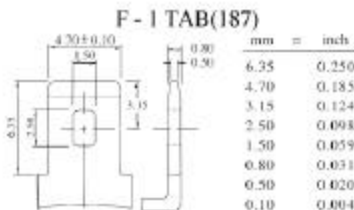
The terminals may be various type.

Excellent terminal sealing construction has been achieved by using long mechanical sealing paths and the selection of small shrinkage ratios for the sealing materials.

Characteristics:

Parameter	Contents
Quality of the Material	1. Brass coated by Silver 2. Brass coated by Pb-Sn Alloy 3. Ca – alloy lead (Ca-0.1%)

### TERMINALS



### NUT DIMENSIONS (MM/INCH) & TIGHTENING TORQUE

TYPE	A	B	C	D	E	BOLT TYPE	TORQUE (kgf · cm)
MX 12170	12.0 / 0.472	11.5 / 0.453	20.0 / 0.079	5.5 / 0.217	5.5 / 0.217	M5	20 - 30
MX 12240							
MX 12310							
MX 12400	15.0 / 0.591	15.0 / 0.591	5.0 / 0.197	7.5 / 0.295	5.5 / 0.217	M6	40 - 55
MX 12600							
MX 12700	18.0 / 0.709	20.5 / 0.807	6.0 / 0.236	9.5 / 0.374	6.5 / 0.256	M6	40 - 55
MX 121000							
MX 122000							
MX 121000	23.0 / 0.906	25.0 / 0.984	8.0 / 0.315	11.5 / 0.453	11.0 / 0.433	M10	150 - 200
MX 122000	23.0 / 0.906	27.0 / 1.063	8.0 / 0.315	12.0 / 0.472	11.0 / 0.433		